

Date: 10-29-15
 Operator's Well Number 14397
 State _____ County _____ Permit _____
 API Well No.: 47- 055-00319

STATE OF WEST VIRGINIA
 DEPARTMENT OF ENVIRONMENT-OFFICE OF OIL AND GAS
 PRE-OPERATION CERTIFICATE
 FOR LIQUID INJECTION OR WASTE DISPOSAL WELL

WELL OPERATOR Camp Creek Disposal DESIGNATED AGENT Kenny Morgan
 Address P.O. Box 555 Address Box 1505
Rosedale, VA 24280 Pineville, WV 24874

GEOLOGICAL TARGET FORMATION Huron Shale Depth 4608 feet(top) to 5720 feet(bottom)

Virgin reservoir pressure in target formation 780 psig

Source of information on virgin reservoir pressure: Field estimate

Perforation intervals 4608' - 5720'

Open-hole intervals None

MAXIMUM PERMITTED INJECTION OPERATIONS

Well head injection pressure: 1465 psig

Bottom hole pressure: 2811 psig

Volume per hour: 90 Bbl

DETAILED IDENTIFICATION OF MATERIALS TO BE INJECTED

Liquids to be injected for oil recovery: N/A

Wastes to be disposed of: Produced fluids from various production wells, coalbed methane wells, pipeline and pit fluids.

Additives (Slurry mediums, inhibitors, solvents, oxidizers, deoxidizers, etc.) Bacteriacide and corrosion inhibitor.

SPECIFICATIONS FOR CATHODIC PROTECTION AND OTHER CORROSION CONTROL N/A

ADDITIONAL DRILLING AS PART OF THE CONVERSION (Complete form WR-35)

DETAILS ON NEW CASING AND TUBING PROGRAM AS PART OF THE CONVERSION (To be completed below unless the new casing and tubing program is described on a form WR-35, submitted in connection with the permit to which this form WR-37 relates.)

CASING OR TUBING TYPE	SIZE	GRADE	WEIGHT PER FT.	NEW	USED	FOOTAGE USED IN DRILLING	FOOTAGE LEFT IN WELL	CEMENT USED	PACKERS (KIND, SIZE, DEPTH SET)
CONDUCTOR	<u>12 3/4"</u>	<u>LS</u>		<u>X</u>		<u>21'</u>	<u>21'</u>		
FRESH WATER	<u>9 5/8"</u>	<u>LS</u>	<u>26</u>	<u>X</u>		<u>225'</u>	<u>225'</u>	<u>410 sks</u>	
COAL									
INTERMEDIATE	<u>7"</u>	<u>LS</u>	<u>17</u>	<u>X</u>		<u>1281'</u>	<u>1281'</u>	<u>230 sks</u>	
PRODUCTION	<u>4 1/2"</u>	<u>M-65</u>	<u>9.5</u>	<u>X</u>		<u>5828'</u>	<u>5828'</u>	<u>410 sks</u>	<u>Tension</u>
TUBING	<u>2 3/8"</u>	<u>J-55</u>	<u>4.6</u>	<u>X</u>		<u>4595'</u>	<u>4595'</u>		<u>4563'</u>
LINERS									

Received
 OCT 29 2015
 Office of Oil and Gas
 Environmental Protection

JW

MECHANICAL INTEGRITY TEST

Test Method: See attached test method as
directed by DEP.

The undersigned certifies that the test was performed on October 29, 2015 and demonstrated mechanical integrity of the well. The test was witnessed by [Signature] representing the Office of Oil and Gas.

Ed Diminick
Well Operator

10-29-15
Date

THIS WELL IS AUTHORIZED FOR INJECTION.

Signed [Signature] UIC PROGRAM DIRECTOR
Date 10/30/15

[NOTE: That the mechanical integrity of this well must be demonstrated again within ninety (90) days of five years from this date in order for injection to continue. Please notify the state inspector 24 hours in advance of the test].

Ed Diminick, P. E.
Well Operator
By: Ed Diminick
Its Consultant

Received
OCT 29 2015
Office of Oil and Gas
WV Dept. of Environmental Protection

JW

Attachment 3

Procedure: Mechanical Integrity Test (MIT)

The Permittee shall utilize a pressure recording device to continuously record the injection pressure.

The 2 3/8" X 4 1/2" annulus currently maintains a consent pressure greater than 200 hundred (200) psi. The Permittee shall utilize a pressure recording device with a resolution of one tenth (0.1) psi to continuously record the annulus pressure during the MIT.

Upon connection of the recording devices, the Permittee shall establish a baseline of five (5) minutes to establish an annulus stability pressure. Once stabilized, the Permittee shall commence injection at a pressure not to exceed one thousand four hundred sixty five (1465) psi for a period of twenty (20) minutes. However, the mechanical integrity injection pressure shall be executed at a minimum 200 psi greater than the established annulus daily baseline pressure.

(annulus stability pressure + 200 psi) ≤ mechanical integrity injection pressure < maximum permitted injection pressure 1465 psi

A deviation ± 25 psi of the annulus pressure shall constitute a MIT failure.

Step 1: Connect the pressure recording devices. (Resolution of one tenth (0.1) psi)

Step 2: Document shut in pressure of both the injection pressure and annulus pressures. (5 minute stability)

Step 3: Commence injection at maximum permitted injection pressure (one thousand four hundred sixty five (1465) psi)

Step 4: Maintain maximum achieved able injection pressure for a period of fifteen (20) minutes.

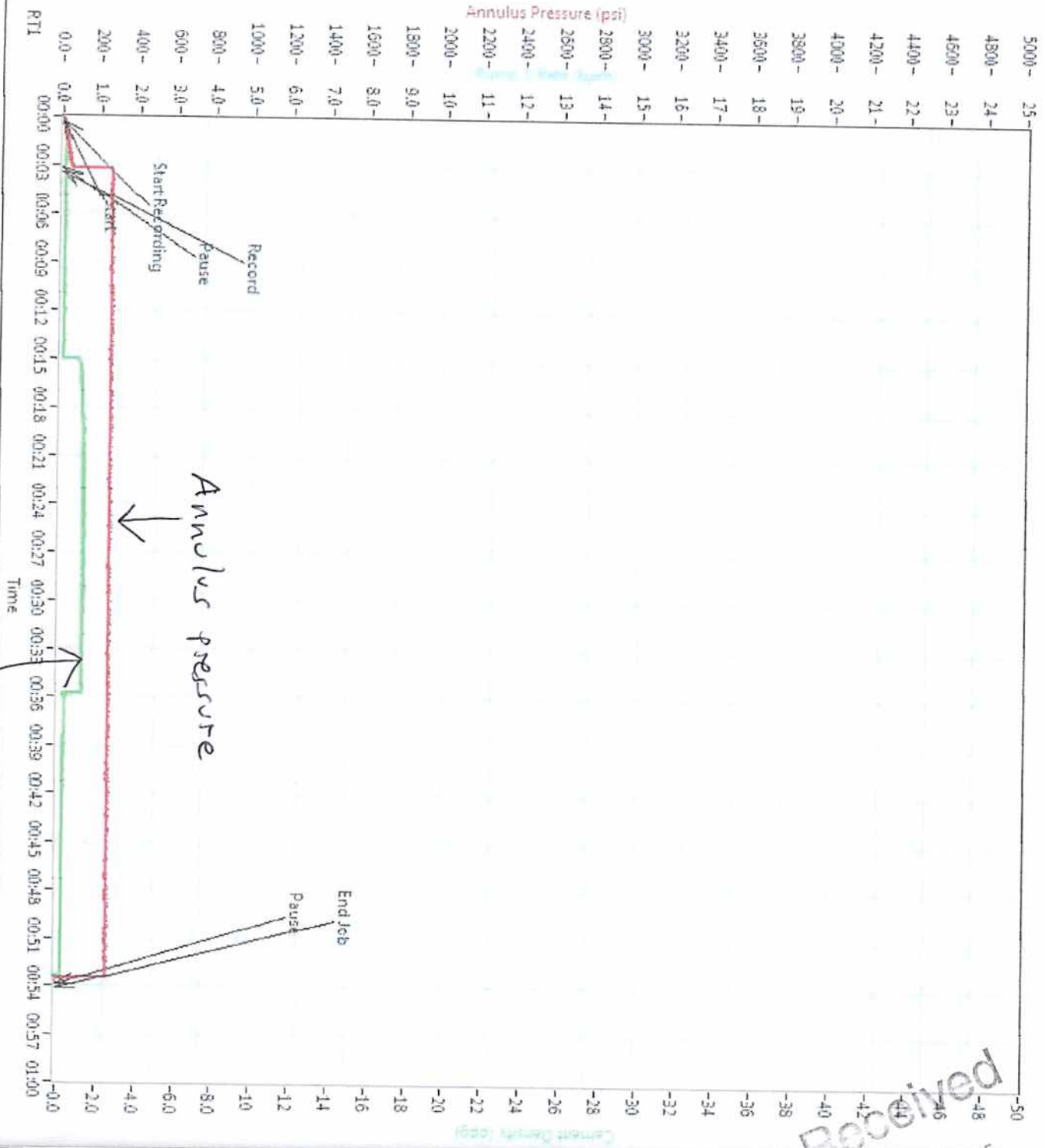
Step 5: Shut in the injection tubing for at least fifteen (15) minutes. (Continue to record the pressure fall off)

Received
October 2015
Oil and Gas
Protection

GAS FIELD SERVICES / CAMP CREEK WELL / MISC

Cement Report

Test Casing - Recorded Time Plot 1 - 1 of 1



Meaningless graph - CTT could not turn off. It is for cement density.

Test Casing - Recorded Time Plot 1 - 1 of 1

XXXXX-999999999-0227 / Thu, Oct 29, 2015

Received
OCT 29 2015

Office of Oil and Gas
Environmental Protection

wellPORT
CEMENT REPORT



Title Page

Field Ticket
**XXXXX-999999999-
0227**

Date
Thu, Oct 29, 2015

Service Center
Norton (33)
Nabors Completion &
Production Services
580 Hawthorn Dr
Norton VA 24273
276-679-5861
276-679-5863

Service Representative(s)
Mark Collins

Job Type
MISC

Lease Project
CAMP CREEK WELL

Number / ID

Township County
MERCER

State
WV

Physical Location

Country

Customer
GAS FIELD SERVICES (GFS)

Mailing Address

Division / District

ROSEDALE VA

Customer Representative(s)
KENNY

PO/RFQ/AFE Code

Received

OCT 29 2015

Office of Oil and Gas
Environmental Protection

Blank Page

XXXXX-999999999-0227 / Thu, Oct 29, 2015

Page 2 of 9

Received

OCT 29 2015

Office of Oil and Gas
Environmental Protection

Cement Report

Table of Contents

Title Page	1
Table of Contents	3
Client Information	5
Lease/Project/Well Information	5
Service Center Information	5
Pre-Job Information	5
Well Information	5
Call-Out Information	5
Stage Summary	6
Test Casing	6
Test Casing - Total(s)	6
Test Casing - Job Log	6
Test Casing - Key & Unit(s)	7
Test Casing - Recorded Time Plot 1 - 1 of 1	8
Post-Job Information	9
Post Job Summary	9
Disclaimer	9

Received

OCT 29 2015

Office of Oil and Gas
Environmental Protection

XXXXX-999999999-0227 / Thu, Oct 29, 2015

Page 3 of 9

BLANK PAGE

XXXXX-999999999-0227 / Thu, Oct 29, 2015

Page 4 of 9

Received

OCT 29 2015

Office of Oil and Gas
Environmental Protection

WV State Production Services

Cement Report

Client Information

Client Reference	GFS
Client	GAS FIELD SERVICES
City State Zip	ROSEDALE VA
Representative	KENNY

Lease/Project/Well Information

Job Type	MISC
Lease or Project	CAMP CREEK WELL
County	MERCER
State	WV

Service Center Information

Service Center	Norton
Location Code	33
NCPS Entity	Nabors Completion & Production Services
Location Address	580 Hawthorn Dr
City State Zip	Norton VA 24273
Phone	276-679-5861
Fax	276-679-5863

Pre-Job Information

Well Information

Casing Size	---
Casing Weight	---
Casing Connection	---
Casing I.D.	---
Hole Size	---
Calculated Annular Excess %	---
BHST	---
T.D.	---
Casing Length	---
Shoe Joint	---
Float Collar	---
Calculated T.O.C.	---
Previous Casing Depth	---
Previous Casing Size	---
Previous Casing Weight	---
Drill Pipe Size	---
Drill Pipe Weight	---

Call-Out Information

XXXXX-999999999-0227 / Thu, Oct 29, 2015

Page 5 of 9

Received

OCT 29 2015

GAS FIELD SERVICES / CAMP CREEK WELL / MISC

Cement Report

Service Center(s)	NORTON
Bulk Location(s)	NORTON
Pumping Equipment	---
Auxilliary Equipment	---
Time Called Out	6:00
Time On Location	9:30
Planned Time of Job	9:30
Weather Conditions	WARM

Stage Summary

==> Test Casing

Test Casing

Test Casing - Total(s)

Time	Comment
12:00:06	---

Test Casing - Job Log

Time	Comment	CASING-psi	Pmp Job	PUMP1f (2)	DENcmt
11:04:15	Establish Rate	80	0.00	-4.8	0.17
11:06:15	Establish Rate	80	0.00	-4.8	0.17
11:08:15	Establish Rate	80	0.00	-4.8	0.17
11:10:16	Establish Rate	86	0.00	-4.8	0.18
11:12:16	Establish Rate	84	0.00	-4.8	0.18
11:14:16	Establish Rate	81	0.00	-4.8	0.17
11:16:16	Establish Rate	79	0.00	-4.8	0.17
11:18:16	Establish Rate	87	0.00	-4.8	0.18
11:20:16	Establish Rate	634	0.00	-4.8	1.05
11:22:16	Establish Rate	661	0.00	-4.8	1.14
11:24:16	Establish Rate	724	0.00	-4.8	1.25
11:26:16	Establish Rate	720	0.00	-4.8	1.24
11:28:16	Establish Rate	785	0.00	-4.8	1.35
11:30:16	Establish Rate	718	0.00	-4.8	1.24
11:32:16	Establish Rate	761	0.00	-4.8	1.31
11:34:16	Establish Rate	725	0.00	-4.8	1.25
11:36:16	Establish Rate	716	0.00	-4.8	1.23
11:38:17	Establish Rate	726	0.00	-4.8	1.25
11:40:17	Establish Rate	703	0.00	-4.8	1.21
11:42:17	Establish Rate	179	0.00	-4.8	0.34
11:44:17	Establish Rate	170	0.00	-4.8	0.32
11:46:17	Establish Rate	164	0.00	-4.8	0.31
11:48:18	Establish Rate	167	0.00	-4.8	0.32
11:50:18	Establish Rate	159	0.00	-4.8	0.30
11:52:18	Establish Rate	162	0.00	-4.8	0.31
11:54:18	Establish Rate	158	0.00	-4.8	0.30
11:56:18	Establish Rate	159	0.00	-4.8	0.30
11:58:18	Establish Rate	154	0.00	-4.8	0.30
12:00:06	End Job	-13	0.00	-4.8	0.02

Received
OCT 29 2015

XXXXX-999999999-0227 / Thu, Oct 29, 2015

Page 6 of 9

Office of Oil and Gas
Environmental Protection

GAS FIELD SERVICES / CAMP CREEK WELL / MISC

Cement Report

Test Casing - Key & Unit(s)

Name	Abbreviation	Units
Casing Pressure	CASING-psi	psi
Annulus Pressure	ANNp	psi
Pump Stage Vol	Pmp Stg (2)	bbl
Pump Job Vol	Pmp Job	bbl
Pump 1 Rate	PUMP1f (2)	bpm
Cement Density	DENcmt	ppg

Received
OCT 29 2015

~~Cement Report~~**Post-Job Information**

Post Job Summary

Pressure Test	---
Initial Circulating Rate	---
Initial Circulating Pressure	---
Lead Slurry Sacks	---
Lead Slurry Volume	---
Tail Slurry Sacks	---
Tail Slurry Volume	---
Bottom Plug Displacement	---
Top Plug Displacement	---
Cmt Vol Circulated to Surface	---
Average Displacement Rate	---
Final Circulating Rate	---
Final Circulating Pressure	---
Plug Bumped?	NO
Pressure When Plug Bumped	N/A
Floats Hold?	N/A

Disclaimer

ALL INTERPRETATIONS ARE OPINIONS BASED ON INFERENCES FROM ELECTRICAL OR OTHER MEASUREMENTS AND NABORS COMPLETION & PRODUCTION (NABORS) CANNOT AND DOES NOT GUARANTEE THE ACCURACY OR CORRECTNESS OF ANY INTERPRETATIONS. NABORS EXCLUDES AND DISCLAIMS ALL WARRANTIES, EXPRESS OR IMPLIED, INCLUDING, AMONG OTHERS, MERCHANTABILITY AND FITNESS FOR A PARTICULAR PURPOSE, EXCEPT FOR WARRANTY OF TITLE. NABORS DOES NOT GUARANTEE OR WARRANT: (1) THAT ITS CHART INTERPRETATION, RESEARCH ANALYSIS, JOB RECOMMENDATION OR OTHER DATA SUPPLIED BY NABORS IS ABSOLUTELY ACCURATE DUE TO THE NUMEROUS VARIABLES WITHIN A WELL; (2) OR THE EFFECTIVENESS OF THE PRODUCT OR THE RESULT OF ITS' USE. THE REMEDY OF THE CUSTOMER IN ANY CLAIM OR LITIGATION ARISING FROM THE SALE OR USE OF ITS PRODUCT IS EXPRESSLY LIMITED TO THE REPLACEMENT COST OF THE PRODUCT. SELLER SHALL NOT BE LIABLE TO CUSTOMER OR ANY OTHER PARTY FOR ANY OTHER DAMAGES, INCLUDING BUT NOT LIMITED TO, INCIDENTAL, CONSEQUENTIAL, PUNITIVE OR WHATEVER. THESE INTERPRETATIONS ARE ALSO SUBJECT TO OUR CURRENT GENERAL TERMS AND CONDITIONS AS SET OUT IN OUR CURRENT PRICE SCHEDULE.

XXXXX-999999999-0227 / Thu, Oct 29, 2015

Page 9 of 9

Received

OCT 29 2015

Injection Annulus

XXXXX-99999999-0227-00

HH:MM:SS	Comment	Casing Pressure - psi	Annulus Pressure - psi	Pump Stage
Vol - bbl	Pump Job Vol - bbl	Pump 1 Rate - bpm	Cement Density - ppg	
11:02:30	Start 170	11	0.00	0.32
11:02:40	Start 114	14	0.00	0.23
11:02:50	Start 79	14	0.00	0.17
11:03:00	Start 76	14	0.00	0.17
11:03:10	Start 80	23	0.00	0.17
11:03:20	Start 83	23	0.00	0.18
11:03:30	Start 83	31	0.00	0.18
11:03:40	Start 82	23	0.00	0.18
11:03:50	Start 86	36	0.00	0.18
11:04:00	Start 88	33	0.00	0.19
11:04:10	Start 78	35	0.00	0.17
11:04:20	Establish Rate 87	40	0.00	0.18
11:04:30	Establish Rate 84	45	0.00	0.18
11:04:40	Establish Rate 82	38	0.00	0.18
11:04:50	Establish Rate 88	48	0.00	0.19
11:05:00	Establish Rate 87	54	0.00	0.18
11:05:10	Pause 81	55	0.00	0.17
11:08:40	Record 87	265	0.00	0.18
11:08:50	Record 82	264	0.00	0.18
11:09:00	Record 78	263	0.00	0.17
11:09:10	Record 82	257	0.00	0.18
11:09:20	Record 82	264	0.00	0.18
11:09:30	Record 81	260	0.00	0.17
11:09:40	Record 83	255	0.00	0.18
11:09:50	Record 77	256	0.00	0.17
11:10:00	Record 87	264	0.00	0.18
11:10:10	Record 82	266	0.00	0.18
11:10:20	Establish Rate 81	256	0.00	0.17
11:10:30	Establish Rate 80	258	0.00	0.17
11:10:40	Establish Rate 84	265	0.00	0.18
11:10:50	Establish Rate 84	265	0.00	0.18
11:11:00	Establish Rate 84	262	0.00	0.18
11:11:10	Establish Rate 79	257	0.00	0.17
11:11:20	Establish Rate 84	262	0.00	0.18
11:11:30	Establish Rate 88	265	0.00	0.19
11:11:40	Establish Rate 82	258	0.00	0.18
11:11:50	Establish Rate 84	258	0.00	0.18
11:12:00	Establish Rate 86	265	0.00	0.18
11:12:10	Establish Rate 84	267	0.00	0.18
11:12:20	Establish Rate 77	262	0.00	0.17
11:12:30	Establish Rate 84	258	0.00	0.18
11:12:40	Establish Rate 80	258	0.00	0.17
11:12:50	Establish Rate 85	261	0.00	0.18
11:13:00	Establish Rate 84	260	0.00	0.18
11:13:10	Establish Rate 78	266	0.00	0.17
11:13:20	Establish Rate 79	261	0.00	0.17
11:13:30	Establish Rate 77	258	0.00	0.17
11:13:40	Establish Rate 86	262	0.00	0.18
11:13:50	Establish Rate 88	262	0.00	0.19
11:14:00	Establish Rate 86	264	0.00	0.18
11:14:10	Establish Rate 84	266	0.00	0.18
11:14:20	Establish Rate 82	258	0.00	0.18
11:14:30	Establish Rate 77	261	0.00	0.17
11:14:40	Establish Rate 88	260	0.00	0.19
11:14:50	Establish Rate 83	267	0.00	0.18
11:15:00	Establish Rate 80	263	0.00	0.17
11:15:10	Establish Rate 78	256	0.00	0.17
11:15:20	Establish Rate 78	258	0.00	0.17
11:15:30	Establish Rate 83	260	0.00	0.18
11:15:40	Establish Rate 83	258	0.00	0.18
11:15:50	Establish Rate 83	261	0.00	0.18

Received

OCT 25 2015

XXXXX-99999999-0227-00

54.7
of test

11:16:00	Establish Rate	84	265	0.00	0.00	-4.8	0.18
11:16:10	Establish Rate	86	265	0.00	0.00	-4.8	0.18
11:16:20	Establish Rate	77	260	0.00	0.00	-4.8	0.17
11:16:30	Establish Rate	79	265	0.00	0.00	-4.8	0.17
11:16:40	Establish Rate	86	259	0.00	0.00	-4.8	0.18
11:16:50	Establish Rate	86	267	0.00	0.00	-4.8	0.18
11:17:00	Establish Rate	85	260	0.00	0.00	-4.8	0.18
11:17:10	Establish Rate	81	266	0.00	0.00	-4.8	0.17
11:17:20	Establish Rate	79	260	0.00	0.00	-4.8	0.17
11:17:30	Establish Rate	77	262	0.00	0.00	-4.8	0.17
11:17:40	Establish Rate	83	258	0.00	0.00	-4.8	0.18
11:17:50	Establish Rate	87	264	0.00	0.00	-4.8	0.18
11:18:00	Establish Rate	78	262	0.00	0.00	-4.8	0.17
11:18:10	Establish Rate	80	266	0.00	0.00	-4.8	0.17
11:18:20	Establish Rate	86	266	0.00	0.00	-4.8	0.18
11:18:30	Establish Rate	86	264	0.00	0.00	-4.8	0.18
11:18:40	Establish Rate	77	262	0.00	0.00	-4.8	0.17
11:18:50	Establish Rate	84	266	0.00	0.00	-4.8	0.18
11:19:00	Establish Rate	88	262	0.00	0.00	-4.8	0.19
11:19:10	Establish Rate	77	259	0.00	0.00	-4.8	0.17
11:19:20	Establish Rate	84	259	0.00	0.00	-4.8	0.18
11:19:30	Establish Rate	80	256	0.00	0.00	-4.8	0.17
11:19:40	Establish Rate	78	263	0.00	0.00	-4.8	0.17
11:19:50	Establish Rate	84	259	0.00	0.00	-4.8	0.18
11:20:00	Establish Rate	171	266	0.00	0.00	-4.8	0.32
11:20:10	Establish Rate	578	265	0.00	0.00	-4.8	1.00
11:20:20	Establish Rate	625	262	0.00	0.00	-4.8	1.08
11:20:30	Establish Rate	668	263	0.00	0.00	-4.8	1.15
11:20:40	Establish Rate	659	265	0.00	0.00	-4.8	1.14
11:20:50	Establish Rate	655	265	0.00	0.00	-4.8	1.13
11:21:00	Establish Rate	633	264	0.00	0.00	-4.8	1.09
11:21:10	Establish Rate	648	265	0.00	0.00	-4.8	1.12
11:21:20	Establish Rate	682	263	0.00	0.00	-4.8	1.18
11:21:30	Establish Rate	660	266	0.00	0.00	-4.8	1.14
11:21:40	Establish Rate	666	268	0.00	0.00	-4.8	1.15
11:21:50	Establish Rate	654	261	0.00	0.00	-4.8	1.13
11:22:00	Establish Rate	658	266	0.00	0.00	-4.8	1.14
11:22:10	Establish Rate	693	261	0.00	0.00	-4.8	1.19
11:22:20	Establish Rate	677	257	0.00	0.00	-4.8	1.17
11:22:30	Establish Rate	668	264	0.00	0.00	-4.8	1.15
11:22:40	Establish Rate	678	259	0.00	0.00	-4.8	1.17
11:22:50	Establish Rate	654	259	0.00	0.00	-4.8	1.13
11:23:00	Establish Rate	686	267	0.00	0.00	-4.8	1.18
11:23:10	Establish Rate	709	261	0.00	0.00	-4.8	1.22
11:23:20	Establish Rate	698	263	0.00	0.00	-4.8	1.20
11:23:30	Establish Rate	697	266	0.00	0.00	-4.8	1.20
11:23:40	Establish Rate	684	260	0.00	0.00	-4.8	1.18
11:23:50	Establish Rate	692	258	0.00	0.00	-4.8	1.19
11:24:00	Establish Rate	727	262	0.00	0.00	-4.8	1.25
11:24:10	Establish Rate	755	264	0.00	0.00	-4.8	1.30
11:24:20	Establish Rate	742	258	0.00	0.00	-4.8	1.28
11:24:30	Establish Rate	723	264	0.00	0.00	-4.8	1.24
11:24:40	Establish Rate	723	258	0.00	0.00	-4.8	1.24
11:24:50	Establish Rate	729	261	0.00	0.00	-4.8	1.25
11:25:00	Establish Rate	709	257	0.00	0.00	-4.8	1.22
11:25:10	Establish Rate	701	259	0.00	0.00	-4.8	1.21
11:25:20	Establish Rate	711	264	0.00	0.00	-4.8	1.23
11:25:30	Establish Rate	724	266	0.00	0.00	-4.8	1.25
11:25:40	Establish Rate	755	262	0.00	0.00	-4.8	1.30
11:25:50	Establish Rate	741	263	0.00	0.00	-4.8	1.27
11:26:00	Establish Rate	774	268	0.00	0.00	-4.8	1.33
11:26:10	Establish Rate	769	261	0.00	0.00	-4.8	1.26
11:26:20	Establish Rate	733	261	0.00	0.00	-4.8	1.26

Received

OCT 29 2015

XXXXX-999999999-0227-00

11:26:30	Establish Rate	736	261	0.00	0.00	-4.8	1.27
11:26:40	Establish Rate	741	265	0.00	0.00	-4.8	1.27
11:26:50	Establish Rate	742	260	0.00	0.00	-4.8	1.28
11:27:00	Establish Rate	739	262	0.00	0.00	-4.8	1.27
11:27:10	Establish Rate	735	260	0.00	0.00	-4.8	1.26
11:27:20	Establish Rate	711	261	0.00	0.00	-4.8	1.22
11:27:30	Establish Rate	711	262	0.00	0.00	-4.8	1.23
11:27:40	Establish Rate	720	266	0.00	0.00	-4.8	1.24
11:27:50	Establish Rate	719	258	0.00	0.00	-4.8	1.24
11:28:00	Establish Rate	730	266	0.00	0.00	-4.8	1.26
11:28:10	Establish Rate	743	264	0.00	0.00	-4.8	1.28
11:28:20	Establish Rate	757	266	0.00	0.00	-4.8	1.30
11:28:30	Establish Rate	770	266	0.00	0.00	-4.8	1.32
11:28:40	Establish Rate	782	259	0.00	0.00	-4.8	1.34
11:28:50	Establish Rate	789	259	0.00	0.00	-4.8	1.35
11:29:00	Establish Rate	778	259	0.00	0.00	-4.8	1.34
11:29:10	Establish Rate	791	266	0.00	0.00	-4.8	1.36
11:29:20	Establish Rate	759	258	0.00	0.00	-4.8	1.30
11:29:30	Establish Rate	759	257	0.00	0.00	-4.8	1.30
11:29:40	Establish Rate	757	265	0.00	0.00	-4.8	1.30
11:29:50	Establish Rate	766	265	0.00	0.00	-4.8	1.32
11:30:00	Establish Rate	755	263	0.00	0.00	-4.8	1.30
11:30:10	Establish Rate	749	258	0.00	0.00	-4.8	1.29
11:30:20	Establish Rate	725	260	0.00	0.00	-4.8	1.25
11:30:30	Establish Rate	716	260	0.00	0.00	-4.8	1.23
11:30:40	Establish Rate	725	257	0.00	0.00	-4.8	1.25
11:30:50	Establish Rate	733	261	0.00	0.00	-4.8	1.26
11:31:00	Establish Rate	765	263	0.00	0.00	-4.8	1.31
11:31:10	Establish Rate	778	257	0.00	0.00	-4.8	1.34
11:31:20	Establish Rate	794	264	0.00	0.00	-4.8	1.36
11:31:30	Establish Rate	760	260	0.00	0.00	-4.8	1.31
11:31:40	Establish Rate	778	260	0.00	0.00	-4.8	1.34
11:31:50	Establish Rate	769	265	0.00	0.00	-4.8	1.32
11:32:00	Establish Rate	758	264	0.00	0.00	-4.8	1.30
11:32:10	Establish Rate	757	258	0.00	0.00	-4.8	1.30
11:32:20	Establish Rate	768	258	0.00	0.00	-4.8	1.32
11:32:30	Establish Rate	771	266	0.00	0.00	-4.8	1.32
11:32:40	Establish Rate	761	257	0.00	0.00	-4.8	1.31
11:32:50	Establish Rate	756	255	0.00	0.00	-4.8	1.30
11:33:00	Establish Rate	747	264	0.00	0.00	-4.8	1.28
11:33:10	Establish Rate	723	258	0.00	0.00	-4.8	1.25
11:33:20	Establish Rate	762	258	0.00	0.00	-4.8	1.31
11:33:30	Establish Rate	762	265	0.00	0.00	-4.8	1.31
11:33:40	Establish Rate	755	261	0.00	0.00	-4.8	1.30
11:33:50	Establish Rate	752	267	0.00	0.00	-4.8	1.29
11:34:00	Establish Rate	757	264	0.00	0.00	-4.8	1.30
11:34:10	Establish Rate	747	265	0.00	0.00	-4.8	1.28
11:34:20	Establish Rate	730	262	0.00	0.00	-4.8	1.26
11:34:30	Establish Rate	725	265	0.00	0.00	-4.8	1.25
11:34:40	Establish Rate	720	255	0.00	0.00	-4.8	1.24
11:34:50	Establish Rate	735	263	0.00	0.00	-4.8	1.26
11:35:00	Establish Rate	733	264	0.00	0.00	-4.8	1.26
11:35:10	Establish Rate	761	262	0.00	0.00	-4.8	1.31
11:35:20	Establish Rate	770	266	0.00	0.00	-4.8	1.32
11:35:30	Establish Rate	736	264	0.00	0.00	-4.8	1.27
11:35:40	Establish Rate	728	257	0.00	0.00	-4.8	1.25
11:35:50	Establish Rate	735	259	0.00	0.00	-4.8	1.26
11:36:00	Establish Rate	733	259	0.00	0.00	-4.8	1.26
11:36:10	Establish Rate	726	257	0.00	0.00	-4.8	1.25
11:36:20	Establish Rate	705	257	0.00	0.00	-4.8	1.21
11:36:30	Establish Rate	714	265	0.00	0.00	-4.8	1.25
11:36:40	Establish Rate	724	267	0.00	0.00	-4.8	1.25
11:36:50	Establish Rate	711	266	0.00	0.00	-4.8	1.22

Received

OCT 29 2015

XXXXX-999999999-0227-00

11:37:00	Establish Rate	711	265	0.00	0.00	-4.8	1.22
11:37:10	Establish Rate	719	261	0.00	0.00	-4.8	1.24
11:37:20	Establish Rate	725	259	0.00	0.00	-4.8	1.25
11:37:30	Establish Rate	745	267	0.00	0.00	-4.8	1.28
11:37:40	Establish Rate	731	269	0.00	0.00	-4.8	1.26
11:37:50	Establish Rate	743	261	0.00	0.00	-4.8	1.28
11:38:00	Establish Rate	751	261	0.00	0.00	-4.8	1.29
11:38:10	Establish Rate	756	264	0.00	0.00	-4.8	1.30
11:38:20	Establish Rate	737	263	0.00	0.00	-4.8	1.27
11:38:30	Establish Rate	737	264	0.00	0.00	-4.8	1.27
11:38:40	Establish Rate	719	263	0.00	0.00	-4.8	1.24
11:38:50	Establish Rate	715	265	0.00	0.00	-4.8	1.23
11:39:00	Establish Rate	708	263	0.00	0.00	-4.8	1.22
11:39:10	Establish Rate	703	266	0.00	0.00	-4.8	1.21
11:39:20	Establish Rate	717	261	0.00	0.00	-4.8	1.23
11:39:30	Establish Rate	715	258	0.00	0.00	-4.8	1.23
11:39:40	Establish Rate	745	260	0.00	0.00	-4.8	1.28
11:39:50	Establish Rate	743	261	0.00	0.00	-4.8	1.28
11:40:00	Establish Rate	715	259	0.00	0.00	-4.8	1.23
11:40:10	Establish Rate	728	260	0.00	0.00	-4.8	1.25
11:40:20	Establish Rate	711	259	0.00	0.00	-4.8	1.22
11:40:30	Establish Rate	716	259	0.00	0.00	-4.8	1.23
11:40:40	Establish Rate	715	262	0.00	0.00	-4.8	1.23
11:40:50	Establish Rate	598	269	0.00	0.00	-4.8	1.04
11:41:00	Establish Rate	166	268	0.00	0.00	-4.8	0.32
11:41:10	Establish Rate	196	261	0.00	0.00	-4.8	0.37
11:41:20	Establish Rate	183	259	0.00	0.00	-4.8	0.34
11:41:30	Establish Rate	190	260	0.00	0.00	-4.8	0.36
11:41:40	Establish Rate	192	261	0.00	0.00	-4.8	0.36
11:41:50	Establish Rate	190	265	0.00	0.00	-4.8	0.36
11:42:00	Establish Rate	188	260	0.00	0.00	-4.8	0.35
11:42:10	Establish Rate	181	263	0.00	0.00	-4.8	0.34
11:42:20	Establish Rate	186	260	0.00	0.00	-4.8	0.35
11:42:30	Establish Rate	181	258	0.00	0.00	-4.8	0.34
11:42:40	Establish Rate	176	256	0.00	0.00	-4.8	0.33
11:42:50	Establish Rate	175	258	0.00	0.00	-4.8	0.33
11:43:00	Establish Rate	182	265	0.00	0.00	-4.8	0.34
11:43:10	Establish Rate	186	263	0.00	0.00	-4.8	0.35
11:43:20	Establish Rate	181	264	0.00	0.00	-4.8	0.34
11:43:30	Establish Rate	182	262	0.00	0.00	-4.8	0.34
11:43:40	Establish Rate	176	267	0.00	0.00	-4.8	0.33
11:43:50	Establish Rate	179	262	0.00	0.00	-4.8	0.34
11:44:00	Establish Rate	179	260	0.00	0.00	-4.8	0.34
11:44:10	Establish Rate	179	263	0.00	0.00	-4.8	0.34
11:44:20	Establish Rate	179	264	0.00	0.00	-4.8	0.34
11:44:30	Establish Rate	177	258	0.00	0.00	-4.8	0.33
11:44:40	Establish Rate	175	264	0.00	0.00	-4.8	0.33
11:44:50	Establish Rate	170	261	0.00	0.00	-4.8	0.32
11:45:00	Establish Rate	175	260	0.00	0.00	-4.8	0.33
11:45:10	Establish Rate	177	264	0.00	0.00	-4.8	0.33
11:45:20	Establish Rate	168	262	0.00	0.00	-4.8	0.32
11:45:30	Establish Rate	174	257	0.00	0.00	-4.8	0.33
11:45:40	Establish Rate	174	266	0.00	0.00	-4.8	0.33
11:45:50	Establish Rate	168	260	0.00	0.00	-4.8	0.32
11:46:00	Establish Rate	171	258	0.00	0.00	-4.8	0.32
11:46:10	Establish Rate	173	258	0.00	0.00	-4.8	0.33
11:46:20	Establish Rate	173	262	0.00	0.00	-4.8	0.33
11:46:30	Establish Rate	166	261	0.00	0.00	-4.8	0.32
11:46:40	Establish Rate	172	266	0.00	0.00	-4.8	0.33
11:46:50	Establish Rate	168	269	0.00	0.00	-4.8	0.32
11:47:00	Establish Rate	169	261	0.00	0.00	-4.8	0.32
11:47:10	Establish Rate	169	269	0.00	0.00	-4.8	0.32
11:47:20	Establish Rate	165	256	0.00	0.00	-4.8	0.31

Received

OCT 29 2015

XXXXX-99999999-0227-00

11:47:30	Establish Rate	170	265	0.00	0.00	-4.8	0.32
11:47:40	Establish Rate	169	268	0.00	0.00	-4.8	0.32
11:47:50	Establish Rate	163	256	0.00	0.00	-4.8	0.31
11:48:00	Establish Rate	162	258	0.00	0.00	-4.8	0.31
11:48:10	Establish Rate	166	257	0.00	0.00	-4.8	0.32
11:48:20	Establish Rate	164	257	0.00	0.00	-4.8	0.31
11:48:30	Establish Rate	169	268	0.00	0.00	-4.8	0.32
11:48:40	Establish Rate	166	258	0.00	0.00	-4.8	0.32
11:48:50	Establish Rate	163	266	0.00	0.00	-4.8	0.31
11:49:00	Establish Rate	163	258	0.00	0.00	-4.8	0.31
11:49:10	Establish Rate	164	265	0.00	0.00	-4.8	0.31
11:49:20	Establish Rate	170	263	0.00	0.00	-4.8	0.32
11:49:30	Establish Rate	162	266	0.00	0.00	-4.8	0.31
11:49:40	Establish Rate	165	264	0.00	0.00	-4.8	0.31
11:49:50	Establish Rate	160	261	0.00	0.00	-4.8	0.31
11:50:00	Establish Rate	167	266	0.00	0.00	-4.8	0.32
11:50:10	Establish Rate	160	259	0.00	0.00	-4.8	0.31
11:50:20	Establish Rate	161	266	0.00	0.00	-4.8	0.31
11:50:30	Establish Rate	160	260	0.00	0.00	-4.8	0.31
11:50:40	Establish Rate	165	264	0.00	0.00	-4.8	0.31
11:50:50	Establish Rate	163	268	0.00	0.00	-4.8	0.31
11:51:00	Establish Rate	158	258	0.00	0.00	-4.8	0.30
11:51:10	Establish Rate	166	262	0.00	0.00	-4.8	0.32
11:51:20	Establish Rate	162	256	0.00	0.00	-4.8	0.31
11:51:30	Establish Rate	164	265	0.00	0.00	-4.8	0.31
11:51:40	Establish Rate	156	260	0.00	0.00	-4.8	0.30
11:51:50	Establish Rate	165	264	0.00	0.00	-4.8	0.31
11:52:00	Establish Rate	160	255	0.00	0.00	-4.8	0.31
11:52:10	Establish Rate	157	262	0.00	0.00	-4.8	0.30
11:52:20	Establish Rate	156	262	0.00	0.00	-4.8	0.30
11:52:30	Establish Rate	163	257	0.00	0.00	-4.8	0.31
11:52:40	Establish Rate	158	257	0.00	0.00	-4.8	0.30
11:52:50	Establish Rate	155	259	0.00	0.00	-4.8	0.30
11:53:00	Establish Rate	152	261	0.00	0.00	-4.8	0.29
11:53:10	Establish Rate	156	263	0.00	0.00	-4.8	0.30
11:53:20	Establish Rate	161	259	0.00	0.00	-4.8	0.31
11:53:30	Establish Rate	164	262	0.00	0.00	-4.8	0.31
11:53:40	Establish Rate	161	267	0.00	0.00	-4.8	0.31
11:53:50	Establish Rate	154	261	0.00	0.00	-4.8	0.30
11:54:00	Establish Rate	157	258	0.00	0.00	-4.8	0.30
11:54:10	Establish Rate	163	262	0.00	0.00	-4.8	0.31
11:54:20	Establish Rate	160	256	0.00	0.00	-4.8	0.31
11:54:30	Establish Rate	162	262	0.00	0.00	-4.8	0.31
11:54:40	Establish Rate	161	261	0.00	0.00	-4.8	0.31
11:54:50	Establish Rate	158	259	0.00	0.00	-4.8	0.30
11:55:00	Establish Rate	156	257	0.00	0.00	-4.8	0.30
11:55:10	Establish Rate	153	262	0.00	0.00	-4.8	0.29
11:55:20	Establish Rate	158	266	0.00	0.00	-4.8	0.30
11:55:30	Establish Rate	162	262	0.00	0.00	-4.8	0.31
11:55:40	Establish Rate	154	266	0.00	0.00	-4.8	0.30
11:55:50	Establish Rate	159	265	0.00	0.00	-4.8	0.30
11:56:00	Establish Rate	161	262	0.00	0.00	-4.8	0.31
11:56:10	Establish Rate	153	255	0.00	0.00	-4.8	0.29
11:56:20	Establish Rate	158	266	0.00	0.00	-4.8	0.30
11:56:30	Establish Rate	154	260	0.00	0.00	-4.8	0.30
11:56:40	Establish Rate	161	266	0.00	0.00	-4.8	0.31
11:56:50	Establish Rate	154	257	0.00	0.00	-4.8	0.30
11:57:00	Establish Rate	156	266	0.00	0.00	-4.8	0.30
11:57:10	Establish Rate	159	266	0.00	0.00	-4.8	0.30
11:57:20	Establish Rate	153	264	0.00	0.00	-4.8	0.29
11:57:30	Establish Rate	149	259	0.00	0.00	-4.8	0.29
11:57:40	Establish Rate	150	258	0.00	0.00	-4.8	0.29
11:57:50	Establish Rate	156	263	0.00	0.00	-4.8	0.30

Received

OCT 20 2015

XXXXX-999999999-0227-00

11:58:00	Establish Rate	152	267	0.00	0.00	-4.8	0.29
11:58:10	Establish Rate	147	259	0.00	0.00	-4.8	0.28
11:58:20	Establish Rate	153	260	0.00	0.00	-4.8	0.29
11:58:30	Establish Rate	-5	259	0.00	0.00	-4.8	0.03
11:58:40	Establish Rate	-6	-7	0.00	0.00	-4.8	0.03
11:58:50	Establish Rate	-11	-2	0.00	0.00	-4.8	0.02
11:59:00	Pause	-12	-9	0.00	0.00	-4.8	0.02

Received

OCT 2 15

Office of Oil and Gas
WV Dept. of Environmental Protection